



COATESVILLE AREA SCHOOL DISTRICT

Master Facilities Plan

School Board Approves Plan

May 2023

Over a period of 8 months, a committee of more than 60 staff, parents, and community members considered options for the future of the District's schools. These options were prepared by architectural and facilities use firms that specialize in K-12 schools and have studied our buildings.

This plan will be phased in over the next six to seven years, with thorough planning and communication.

Four K-5 Elementary Schools

- Renovate Kings Highway Elementary School
- 8 classroom addition at Reeceville Elementary School
- No significant work at Rainbow Elementary
- Close Caln and East Fallowfield Elementary Schools
- **Build a new elementary school on the site of the closed South Brandywine Middle School**

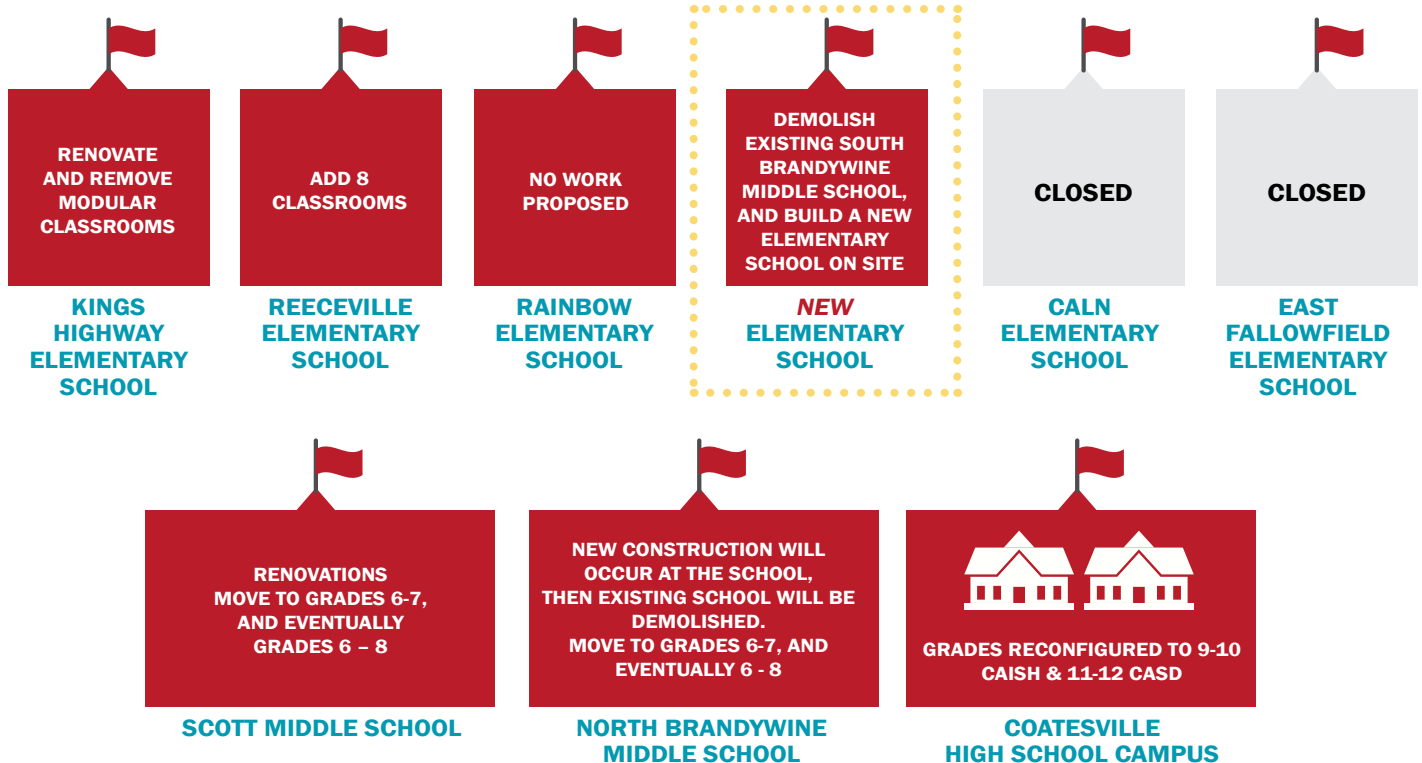
Two 6 – 8 Middle Schools

- Phase 1 middle school renovation: Renovate Scott Middle School, and build a new wing onto the existing North Brandywine Middle School. Move grades 6 and 7 into both Scott and North Brandywine (fall 2024.)
- Phase 2 middle school renovation: Build a new North Brandywine onto the other side of the new wing. Demolish the old North Brandywine. At that time (2029), both middle schools would then house grades 6–8.

One 9 – 12 High School

- Once middle school renovations are complete, 8th grade would move out of the high school.
- Coatesville Area Intermediate High School would serve grades 9–10
- Coatesville Area Senior High School would serve grades 11–12

Attendance boundaries for students will change at elementary and middle school as grade levels are reconfigured and a new school is built. This will be done thoughtfully and with consideration for all.



The Committee and Board recognized that we must improve our facilities to secure our future.

Our financial stability is at stake.

Currently, the District sends about **\$67 million** to charter schools each year. More than half of every tax dollar goes to charter schools.



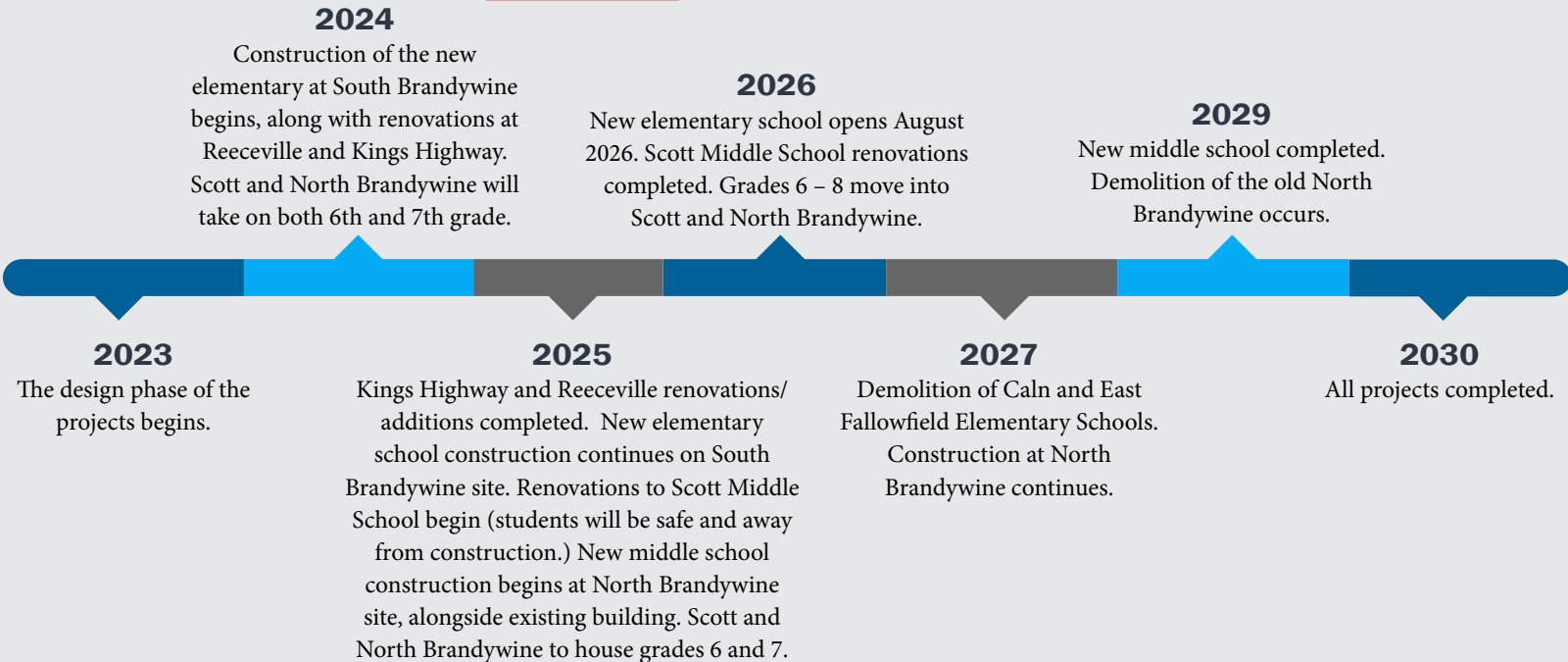
Research shows that high-quality facilities, particularly at the elementary level, is one of the primary draws for families who are deciding where to educate their children.

- ➔ The District has delayed work on our facilities for years, and it is costing us money – both in expensive repair work and in lost enrollment as families choose charter schools that have newer facilities.
- ➔ It's important to rebalance the equity in our facilities; Some district buildings are updated while others are outdated, cramped, and in serious need of repair.
- ➔ A stronger school system with high quality school buildings will positively impact property values in the District and help us to attract additional charter school students.
- ➔ New home developments are bringing more students to our District. We need quality facility space to educate them.

Funding the Plan

- Total cost of the entire proposed construction plan: Approximately \$255 million
- The District has a detailed borrowing plan to fund this project.
- **Over the span of 2023 to 2032, the cost of this facilities plan will require an average annual tax increase of about \$6.14 per month to District homeowners (based on a median assessed home value of \$123,000.)**

PROPOSED Construction Timeline



NEXT STEPS:

- The District will assemble a committee of staff and parents to begin working with architects on the design of a new elementary school, as well as any renovations/additions that will occur to other schools.
- The District will thoroughly communicate transition plans as they take shape.